

School PTA/PTO and Administration

SY 2004-2005 Parent-Teacher Organization Officers

Barbara Santos	President
Cynthia Moises	Vice-President
Ceferino Duarosan	Secretary
Lillian Basto	Treasurer
School Principal	Goring Duenas
Assistant Principal	Julie Mendiola
Telephone	632-1858/5176
Fax	637-2490



P.L. 26-26 School Performance Grade Classification

SY 2003-2004 SCHOOL PERFORMANCE

Indicator	School Data	P.L.26-26 Grade Classification
SAT Grade 1 Reading Levels 3 & 4	61%	Satisfactory
SAT Grade 1 Math Levels 3 & 4	25%	Low
SAT Grade 3 Reading Levels 3 & 4	20%	Low
SAT Grade 3 Math Levels 3 & 4	12%	Low
SAT Grade 5 Reading Levels 3 & 4	16%	Low
SAT Grade 5 Math Levels 3 & 4	12%	Low
School Passing Rate	100%	Exceptional
Student Attendance Rate	95%	Satisfactory
Employee Attendance Rate	92%	Satisfactory
COMPOSITE SCORE/GRADE	54%	Satisfactory

School Initiatives and Exemplary Programs That Impact Teaching and Learning

Special Programs

- Multiage Program 236 student participation for SY 03-04
- Kindergarten Academy
- DEED Program
- Title IV Summer School Program
- Homeroom Parent Club
- Middle School Transition Team
- SAT9 Family Night

Extracurricular Activities

- Student Council Association
- Future Educators of Guam
- Youth Crime Watch
- Peer Mediators Club
- Math Olympiad
- Peace-Makers Association
- Safety Patrol
- GVB WAVE Club
- Guam Chamber of Commerce Holiday participation
- Box Tops for Education
- PTA—Parent Advisory Group
- K-Mart School Spirit Program
- Multi-age Extravaganza

Exemplary Accomplishments

- Head Start New Building
- E-rate connection
- DI Reading Mastery Implementation (SEIPPE Grant) 3rd Grade Reading Mastery at 75% on or above grade level (baseline)

Special Awards Received By Students/Staff

- End-of-the-Year Principal's Award (4.0 and above GPA) — 112 student recipients
- Faculty/Staff Perfect Attendance Award



School Newsletter:

“Carabao Chronicle”

SCHOOL ANNUAL REPORT CARD

Maria A. Ulloa Elementary School
SY 2003-2004



Home of the Carabaos

Colors: Green and Gold

LOCATED IN DEDEDO, GUAM

Mission:

“Maria A. Ulloa Elementary School community will ensure that all students acquire the necessary skills that enable the highest standard of success.”

Barbara Santos
President, Parent-Teacher Organization

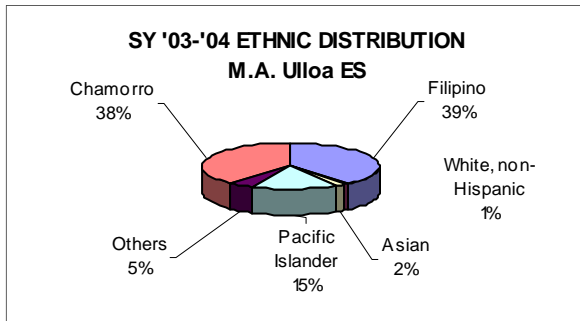
Goring Duenas
Principal

STUDENT ENROLLMENT

Maria A. Ulloa Elementary School is one of twenty-five elementary schools within the Department of Education and consists of grades Kindergarten through 5.

SY 2003-2004 STUDENT ENROLLMENT BY GRADE

Grade Level	Enrollment	Percentage
Kindergarten	160	18%
1st	150	17%
2nd	159	18%
3rd	152	17%
4th	154	17%
5th	130	14%
Total:	905	100%



AVERAGE DAILY ATTENDANCE/MEMBERSHIP

SY 03-04 Average Daily Attendance (ADA)	871
Average Daily Membership	915.5
Attendance Rate	95%

STUDENTS PARTICIPATING IN FREE/REDUCED LUNCH

Free	470
Reduced	79
TOTAL	549



SPECIAL PROGRAMS

In addition to a full array of curricular programs, a number of eligible students are also enrolled in the following:

GATE:	50	Head Start:	53	LOTE:	344
DEED:	52	DEED	118		

HUMAN RESOURCES

Position	No. of Employees	% of Total
Principals/Assistants	2	2%
Teachers	57	62%
Professional/Ancillary	1	1%
Support	32	35%
TOTAL	92	100%

AVERAGE EMPLOYEE ATTENDANCE RATE

Position	Attendance	Absence
Principals/Assistants	94%	6%
Teachers	94%	6%
Professional/Ancillary	82%	18%
Support	90%	10%
OVERALL AVERAGE	92%	8%

Absentee rates for teachers and principals include administrative leave.

FY 2004 ACTUAL EXPENDITURES MARIA A. ULLOA ELEMENTARY SCHOOL

Category	Amount	Percent
Salaries and Benefits	\$2,905,317.54	94%
Contractual Services	0.00	0%
Supplies and Materials	39,431.58	1%
Equipment	0.00	0%
Utilities	162,406.73	5%
TOTAL	\$3,107,155.85	100%



STUDENT ACHIEVEMENT

GUAM PUBLIC LAW 13-101. "The Board shall evaluate the efficiency of the instructional program in contributing to the achievement of the basic skills and shall continually revise both outcome statements and instructional procedures on the basis of evaluative data."

The Comprehensive Training Program (CTP) provides educators, parents, students, and the rest of the education community with different measures to partially assess student academic achievement. The following tests are administered to various grade levels: **SAT9** Stanford Achievement Test: Grades 1,3,5,7,9,10,11. The graphs in the next section show SY 2001-2002 to SY 2003-2004 SAT9 results for reading and mathematics, among other subjects.

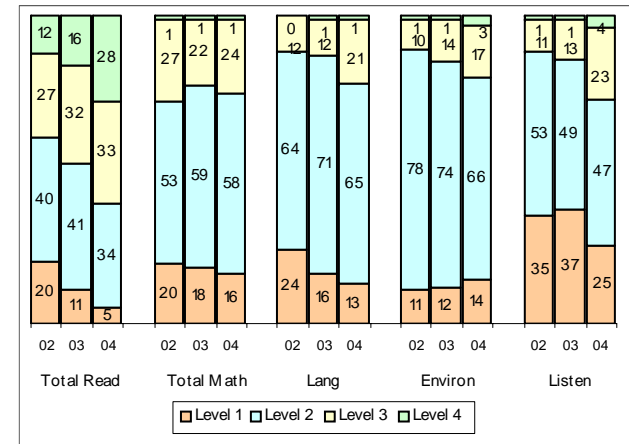
SAT9 PERFORMANCE STANDARDS

- Level 1** - indicates little or no mastery of fundamental knowledge and skills
- Level 2** - indicates partial mastery of the knowledge and skills that are fundamental for satisfactory work
- Level 3** - represents solid academic performance, indicating that students are prepared for the next grade
- Level 4** - signifies superior performance beyond grade level mastery

Note: Numbers in following graphs reflect performance level percentages starting with Level 4 at top, Level 3 second from top, Level 2 third number from top, and Level 1 at bottom.

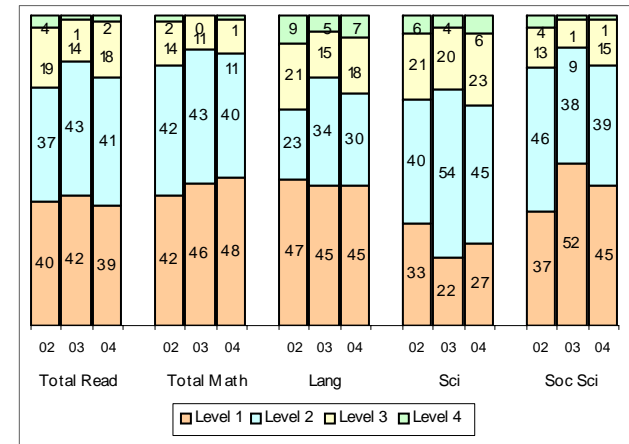
SAT9 YEAR 2002 TO 2004 PERFORMANCE LEVELS

M.A. ULLOA ELEMENTARY GRADE 1



SAT9 YEAR 2002 TO 2004 PERFORMANCE LEVELS

M.A. ULLOA ELEMENTARY GRADE 3



SAT9 YEAR 2002 TO 2004 PERFORMANCE LEVELS

M.A. ULLOA ELEMENTARY GRADE 5

